

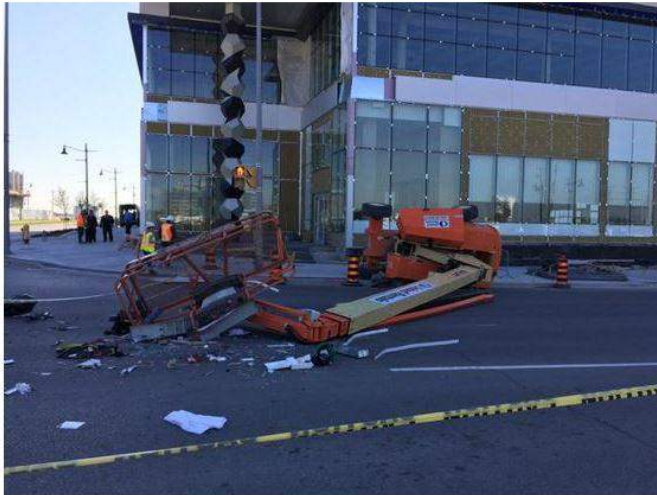
LESSONS LEARNED



Mark Douglas
@Douglas680NEWS

Follow

One man dead, another hurt when this skyjack tipped over this morning. Update from police in @680News at 9:30.



News Article: news.nationalpost.com
<http://bit.ly/1Ew9db8>

FAVORITE
1



6:22 AM - 21 May 2015



⚠ DANGER	
	Tip-over Hazard Altering or disabling limit switches can result in machine tip-over. Machine tip-over will result in death or serious injury.
	Do not alter or disable limit switch(s). 31060 C

➤ Avoid tip-over hazards!

- Always use **proper fall protection** when operating an aerial lift.
- **Never alter or disable warning devices** or limit switches – they are there to help avoid tip-over hazards.
- **Survey the area** where the lift will be used before moving or driving the lift to identify and avoid potential hazards such as curbs, pot-holes, excavations, or floor-holes.

OSHA Standard 1926.453(b)(2)(iv) *Employees shall always stand firmly on the floor of the basket, and shall not sit or climb on the edge of the basket or use planks, ladders, or other devices for a work position.*